



# THE PALETTE



## Long Beach Art League

P.O. Box 862 Long Beach NY 11561  
Facebook Page: Long Beach Art League  
Instagram @longbeachartleague  
Website: [www.longbeachartleague.com](http://www.longbeachartleague.com)

March 2025

*The Long Beach Art League expresses sincerest gratitude to Jude Post, daughter of founder Leona Post, for her generous donations through the John J. Flemm Foundation. The funding has been instrumental to our organization and has enabled us to successfully promote the visual arts in the City of Long Beach. In addition, the LBAL provides the community with a variety of art learning experiences which include meaningful classes for seniors and art scholarships for talented high school students. We are deeply grateful for Ms. Post's devoted support and commitment to the arts.*

## NEXT MEETING

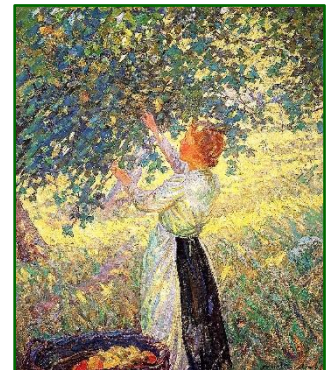
**Wednesday, March 5<sup>th</sup> from 7:00 - 8:30PM**

In person at the Long Beach Public Library Auditorium

Located at 111 West Park Ave. in Long Beach

**Art Lecture by Mary L. Dono: *Mary Cassatt and Helen McNicoll***

**Program Info:** Guest Speaker Mary L. Dono will discuss the work of two extraordinary Impressionist painters, Mary Cassatt (American, 1844-1926) and Helen McNicoll (Canadian, 1879-1915). At a young age, both artists had relocated to Europe to study. Cassatt often created images of the social and private lives of women, with particular emphasis on the intimate bonds between mothers and children. McNicoll was skilled at painting rural landscapes and figures. McNicoll had the challenge of being placed in the same category as Cassatt but both played a significant role in popularizing Impressionism in North America.



**Speaker Info:** Mary L. Dono, Ed.D. is a retired educator and administrator for the New York City Department of Education. She is a lecturer of art history and has presented at many venues such as Hutton House Lectures of LIU, Queensborough Community College, Molloy College for Lifelong Learning and various libraries in NYC and Long Island. Dr. Dono has also served as a docent for 6 years at the Coe Hall Historic House Museum at Planting Fields Arboretum.

## SPOTLIGHT ON WOMEN EXHIBIT

Long Beach Art League members are invited to participate in the *Spotlight on Women Exhibit* at the 2<sup>nd</sup> Floor Gallery of the Long Beach Public Library.

**Receiving Date:** Saturday, March 1<sup>st</sup> from 11:00AM – 12:00PM

**Location:** 2<sup>nd</sup> Floor Gallery at the Long Beach Public Library (111 W. Park Ave.)

**Theme:** Women **Entry Fee:** None **Pickup Date:** March 29<sup>th</sup>

*Show open to LBAL members only. One piece of art per person.*

Continued on next page

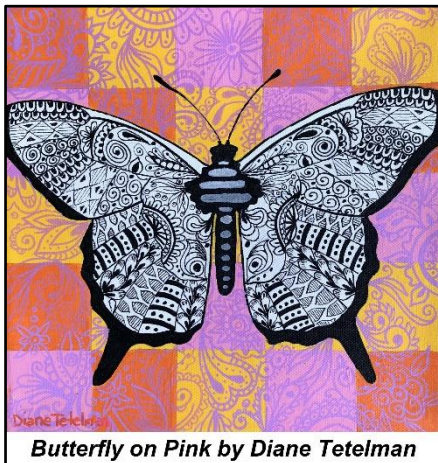
## **SPOTLIGHT ON WOMEN EXHIBIT** - Continued

Please make sure artwork is properly framed and securely wired. A completed Entry Form must be submitted with your artwork. If you have not done so, please read the Exhibition Guidelines, a document which has the procedures for submitting artwork. It is on the LBAL website at [www.longbeachartleague.com](http://www.longbeachartleague.com), and the Entry Form is on the last page. (Optional: Artists, who would like their work to be considered for exhibit publicity, should email a high resolution image along with the title, medium and dimensions to Denise Bory at [sundaze517@aol.com](mailto:sundaze517@aol.com) by February 22<sup>nd</sup>.)

**Pickup Date** (*Who We Are Exhibit*): Saturday, March 1<sup>st</sup> from 11:00AM – 12:00PM

<b>LBAL Shows &amp; Meeting Dates*</b>		
<b>Month</b>	<b>LBPL Gallery Exhibit</b>	<b>General Meeting</b>
Apr.	Beauty of Nature – A Juried Exhibit <i>A Juried Exhibit for Members</i> 03/29/25	Artists' Reception & Judge's Remarks 04/02/25 7PM
May	Exhibit TBA <i>A Membership Only Exhibit</i> 05/03/25	SHARE SQUARES EVENT 05/07/25 7PM Email <a href="mailto:mfeartist@gmail.com">mfeartist@gmail.com</a> to register
Jun.	The Leona Post Juried Exhibit <i>A Juried Exhibit for Members</i> 05/31/25	Artists' Reception & Judge's Remarks 06/04/25 7PM
*Program information subject to change based on inclement weather or unforeseen circumstances.		

## **MEDICAL ARTS PAVILION WINTER EXHIBIT**



On January 17<sup>th</sup> the Long Beach Art League and West End Arts presented a winter art show, the *New Beginnings Exhibit*, at Mount Sinai Doctors - Long Beach, the healthcare pavilion located at 440 East Bay Drive. A committee had reviewed the digital images submitted by members of both organizations and selected the artwork for the show. Twenty-one pieces of art were hung in the large meeting room and hallway of this modern facility. This year there will be an increased number of viewers for the art exhibit because Mount Sinai South Nassau will offer Tai Chi classes at this location.

Congratulations to the following LBAL members whose artwork has been included in the *New Beginnings Exhibit*: Meri Ezratty, Scott Ferrone, Mitchel Greenspan, Joan Israel, Barbara Lobosco, Adriena Masi, Lillian Reznicek, Mitchell Rodbell, Lisa Dawn Romano, Alice Somma, Susan Laudani Stolfi, Diane Tetelman and Laura Toledo. The artists' reception date is Wednesday, March 19<sup>th</sup> from 5:30 -7:00PM.



## WHO WE ARE EXHIBIT



On February 1<sup>st</sup> the Long Beach Art League presented its interesting and diversified *Who We Are Exhibit* which will be on display in the 2<sup>nd</sup> Floor Art Gallery of the Long Beach Public Library until the month's end. The community art show includes creative visual expressions of deep feelings such as hope, love, anxiety and trauma. Explorations of self are displayed as well as illustrations of favorite places and pastimes. The exhibit has a variety of artwork such as fascinating portraits, tranquil scenes, intriguing mixed media creations, powerful abstracts and more.

On February 5<sup>th</sup> the Long Beach Public Library (LBPL) and the Art League jointly presented a hybrid art lecture, *John Singer Sargent and Fashion*, with Professor Thomas Germano. The program was excellent and very well attended. LBAL members and the public were able to join in person or via ZOOM. Sincerest appreciation to the Library for arranging this very special lecture for the art community!

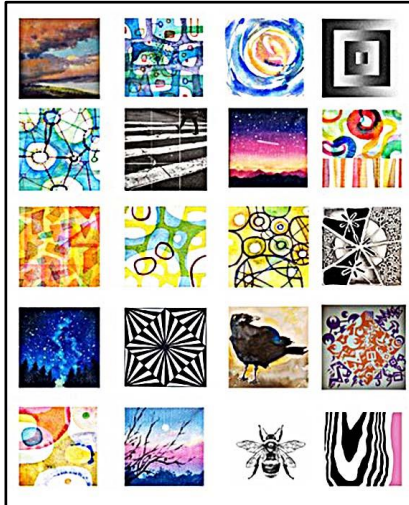
### Live Model Studio Session - January 12, 2025



LBAL members, local artists and senior residents had a productive and enjoyable afternoon at the Live Model Studio Session on January 12<sup>th</sup>. The drawing and painting activities took place in the bright and spacious Community Room at 225 West Park Ave. where a professional model was present. Special thanks to members Stefani Jarrett, Linda Kass, Kathryn Ramsey and President Lissette Resnick for coordinating the session. Our sincerest appreciation to Executive Director Myrnissa A. Stone of The Long Beach Housing Authority for supporting this community art event. The next Live Model Studio Session will be on Sunday, February 23<sup>rd</sup> from 1:00 - 4:00PM. Please contact Lissette at [lissette@longbeachartleague.com](mailto:lissette@longbeachartleague.com) for more information.

# SHARE SQUARES EVENT

## *Twenty Pieces of You, Reimagined*



***Call to LBAL artists: Participate in a league-wide collaboration project, SHARE SQUARES!*** At the General Meeting on Wednesday, May 7<sup>th</sup> at the Library, we will all share small pieces of our artwork with fellow artists and recombine them to create new works of art.

Read the details of the exciting project below. To sign up for the SHARE SQUARES event, email Meri at [mfearist@gmail.com](mailto:mfearist@gmail.com) and put *Share Squares* in the subject line. You may also register by putting your name on the *Share Squares* list at the March meeting.

### At Home

1. Work 5 - 10 minutes a day to create your part of the collaboration using any one of the 3 methods in the box below. Make sure all artwork is original.

*Method #1:*

Make an artwork 8" x 10" in size.

When the artwork is completely dry, use a pencil and ruler to create a grid of 2" x 2" squares on the back of the artwork. Neatly cut the artwork into 20 squares.

*Method #2:*

Create 20 individual, 2" x 2" mini artworks.

*Method #3:*

Re-cycle an old piece of artwork or parts of artworks. Turn them over.

Measure and neatly cut out 20 squares of 2" x 2" each.

2. Any 2-dimensional medium will work - watercolor, acrylic, ink, mixed media, photography, collage, colored pencil, etc.
3. When you have finished your 20 squares on mini artwork, put 4 squares in each of 5 envelopes. Put your name on all the envelopes.
4. You will use one envelope for yourself. Number the remaining envelopes #1 - #4 and label *Squares to Share*.

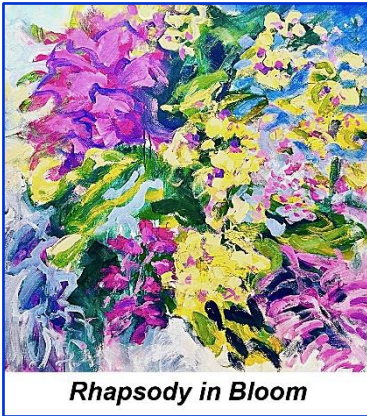
### At the Share Squares Event on May 7<sup>th</sup>

1. Bring the 5 envelopes that you have prepared with 4 squares of mini artwork in each.
2. You will be assigned to a group of LBAL members. You will share your envelopes of mini artworks with 4 people.
3. Each person will have 4 of their own squares plus 16 from other artists.
4. The Art League will provide paper, to act as a surface for the recombined squares, glue sticks, rulers and some other materials.
5. Each artist will arrange their 20 squares to create a collaborative piece. Glue them down once you are satisfied with the composition. Have all the members of your group sign the back of your collaborative artwork when it is complete. Take your new creation home and enjoy! Think of your fellow artists and keep sharing your talents!



## WHAT'S HAPPENING

### ***A Still Colorful Life***



Starting February 18<sup>th</sup> LBAL member Mitchell Rodbell's solo exhibit, *A Still Colorful Life*, will be at the Pleiades Gallery, one of the most well-established galleries in New York City. His show confirms that our lives can always exceed our expectations, particularly if led passionately and creatively through growth and discovery. Rodbell explores the sometimes overlooked fluidity and beauty that surrounds us in everyday life. He draws inspiration from oceans, sunsets, nature preserves, sky scenes and blooms. By combining his love of photography, travel and painting, he is able to effectively portray and convey truly captivating scenes.

This talented artist is fascinated by the process of capturing an image, followed by manipulating its colors, shapes and compositions and then translating all elements into his stunning artwork. The paintings display rich bursts of color and texture that evoke the rhythm and energy of the world in which we live. He is a story teller who frequently paints parallel scenes, in vignettes, in order to maximize the viewer's experience.

Working primarily in acrylic and watercolor, on both canvas and paper, Rodbell incorporates intense washes of paint, various mediums, blending, spraying, scraping and lively brushstrokes. His spontaneous techniques allow for many layers and renditions within each piece, underscoring his inventive process and inspiration.



"In my first ever solo show, *A Still Colorful Life*, I am thrilled to share my love of light, the power of vibrant color, texture and emotion as expressed through my paintings. I am so enraptured with the power of colorful images and their deep-seated positive effect that they can have on the viewer. I am keen to share it with my community and beyond," said Mitchell Rodbell.

*A Still Colorful Life* will be at the Pleiades Gallery, located at 547 West 27<sup>th</sup> St. in Suite 301, from February 18<sup>th</sup> - March 15<sup>th</sup>. Rodbell will be at the Gallery to greet guests on Tuesdays through Saturdays from 12:00 – 6:00PM. Everyone is invited to the artist reception on Saturday, March 1<sup>st</sup> from 3:00 – 6:00PM.

### ***Floral Dreams***



Congratulations to Lillian Reznicek who will present her stunningly beautiful solo exhibition, *Floral Dreams*, at the South Nassau Unitarian Universalist Church located at 228 South Ocean Ave. in Freeport. Lil invites LBAL members and the public to attend the artist reception on Sunday, February 23<sup>rd</sup> from 11:30AM – 1:00PM.

## **PRESIDENT'S MESSAGE**



Dear LBAL Members,

As we welcome the arrival of spring after an especially cold winter, we are reminded of the season's promise of renewal, growth and transformation. In that spirit, our March exhibit, *Spotlight on Women*, explores the power, resilience and impact of women through art. Just as spring breathes new life into the world around us, this exhibit showcases the many ways women inspire and shape our lives. We invite you to join us in honoring this theme and experiencing the diverse perspectives of the participating artists.

Looking ahead, I'm thrilled to announce that the Long Beach Art League is hosting our second *Fine Art Expo* in collaboration with the West End Arts Visual Arts Guild at the Allegria Hotel on *Sunday, May 4<sup>th</sup>*. This event promises to be an exciting opportunity for artists and art lovers alike to connect, exhibit their work and celebrate the vibrant art community of Long Beach. Mark your calendars - this is an event you won't want to miss!

Our Art League thrives on the contributions of its members, and we're calling on you to consider volunteering for the open positions listed in the newsletter or helping on a part-time basis. Your involvement is essential in keeping our organization dynamic and ensuring the continued success of our events and initiatives. If you've ever thought about lending a hand, now is the perfect time to step forward and make a difference.

As always, thank you for your devoted support and passion for the arts. I look forward to seeing you at our upcoming events!

Creatively yours,  
Lissette Resnick, President  
[lissette@longbeachartleague.com](mailto:lissette@longbeachartleague.com)

## **CORRESPONDING SECRETARY NEEDED**



You are invited to join the LBAL Administrative Team in a vital role as Correspondence Secretary. The main responsibility is timely communication with Art League members. This position is ideal for someone who is organized and detail-oriented and has good writing skills. Proficiency in emailing and managing documents and images is required. Guidance and training will be provided. Interested individuals should contact President Lissette Resnick at [lissette@longbeachartleague.com](mailto:lissette@longbeachartleague.com).

## **OPEN LBAL ADMINISTRATIVE POSITIONS**



The Long Beach Art League announces the following open administrative positions with a summary of responsibilities. As a volunteer, you can play a vital role in helping LBAL continue our impressive 72-year legacy and grow as a vibrant and innovative organization. Members, with a proactive attitude and a passion for supporting local artists and their work, are asked to seriously consider one of these positions. Working with a friendly team, contributing to the art community and experiencing professional growth can be extremely rewarding. Guidance, training and support will be provided for all positions. Contact President Lissette Resnick at [lissette@longbeachartleague.com](mailto:lissette@longbeachartleague.com) to apply or for more information.

### **ART EXHIBIT COORDINATOR**

#### **Job Description & Qualifications:**

The Art Exhibit Coordinator plays an important role in organizing and promoting the LBAL exhibits. This volunteer position is ideal for someone with strong organizational skills, a good eye for detail, good communication skills and the ability to work collaboratively with others. Basic technical proficiency in email management and digital tools (e.g., Google Drive or similar) is required.

#### **Key Responsibilities:**

- Artwork Submission Management - Receive and organize emailed artwork submissions.
- Promotion and Outreach - Disseminate exhibit information via email and social media posts. Assist in creation of promotional materials for upcoming exhibits.
- Venue Management – Seek new venues for members to exhibit their work.

### **TREASURER ASSISTANT**

#### **Job Description & Qualifications:**

The Treasurer Assistant supports the Treasurer in managing the financial activities of the organization. This volunteer position is ideal for someone who is detail-oriented, organized, has good communications skills and the ability to work collaboratively with others. Basic understanding of financial recordkeeping and experience with Excel is a plus.

#### **Key Responsibilities:**

- Financial Recordkeeping – Help prepare financial reports and maintain accurate financial records, including invoices and bank statements.
- Donation and Expense Tracking – Monitor incoming donations and ensure proper documentation and acknowledgment. Track expenses and support reimbursement processes as needed.
- Administrative Support – Collaborate with the Treasurer on budget preparation and planning. Help ensure compliance with nonprofit financial regulations and policies.

## NEW MEMBER

### ***Denise Gilgannon Collins***

The Long Beach Art League is delighted to welcome new member Denise Gilgannon Collins, a talented art educator who has resided in Long Beach since 1992. In 2021 she received a well-deserved *Women in the Arts Award* from Artists in Partnership for her contributions to the Arts and Education. Before retiring in June 2023, she taught at the West and Lindell Elementary Schools and had previous assignments in the NIKE Alternative High School, Long Beach Middle School and the Lido Elementary School. Denise was grateful to be able to work in her own community where she regularly encountered former students and their families. It was always wonderful to catch up with their lives and reminisce about the days in the Art Room together!



After Hurricane Sandy in 2013, Denise opened the *Mermaid Art Studio* in the West End of Long Beach. Providing a creative space for young people and adults was a lifelong dream of hers. She appreciated the opportunity to meet and work with so many people in the local area. Although it was a thrilling experience, the studio only lasted three years. An extremely deep pocket is needed to sustain a business.

Denise is looking forward to exploring new ways of art-making with others which motivated her to join the Art League. She currently volunteers at the Nassau County Museum of Art where she monitors a figure drawing class weekly and will be teaching a few workshops there. Her first love in the creative process is drawing, primarily figurative narrative work. That is followed closely by painting with her preferred medium, gouache paint. To be as resourceful as possible with a focus on being environmentally conscious, she uses upcycled materials such as cardboard, paper and wood. Go to Instagram @dgilgannonart to see some of her artwork.

Denise has many interests and hobbies. She is a passionate cat lover who lives with two rescues, Luna Bella and Athena Louise. Taking yoga classes as well as walking and bike riding are her favorite activities to keep physically fit and mentally healthy. She is an avid reader of fiction. A firm believer that *it is never too late to learn new things*, Denise has welcomed the challenge of playing two instruments - the ukulele and the guitar. Although she is not musically inclined, she is hoping to get more proficient at both during her retirement years.

To her Long Beach is a truly beautiful community with remarkable features such as the ocean, boardwalk and an excellent library. Denise makes it a point to appreciate these gifts every day.



## THE ARTIST'S PALETTE

This column features art history and work methods which may be helpful to artists.

### **Romantic Movement and William Turner**

By Editor Dina Fine

Throughout the development of European art many different movements emerged. Art was a tool to describe the order and reason of the world. It was a vehicle used for numerous activities such as teaching lessons, telling bible stories and decorating churches. These periods move through history weaving their way into music, sculpture, mathematics and literature. Starting in Western Europe in the middle of the 18<sup>th</sup> century, the dominant cultural movement was Neoclassicism. Drawing inspiration from the classical art and the cultures of Ancient Greece and Rome, it emphasized order, rationality, logic and personal accountability.

Towards the end of the 18<sup>th</sup> century, the Romantic Movement originated in Europe and advocated the importance of subjectivity, imagination and the appreciation of nature. Romanticism was a revolt against the aristocratic social and political norms of the Age of Enlightenment and the materialism and environmental degradation of the Industrial Revolution. Romanticists had a reverence for nature and the supernatural and a fascination with the heroic and the sublime. They believed that beauty evokes a strong emotional response.

One of England's best-loved Romantic painters, Joseph Mallard William Turner (1775 – 1851), was known in his time as William Turner. He is considered to be a great landscape painter, printmaker and watercolorist. His distinctive style emphasized light, color and atmosphere which resulted in a body of work with expressive coloring, imaginative landscapes and turbulent marine paintings. He left behind more than 550 oil paintings, 2,000 watercolors and 30,000 works on paper.



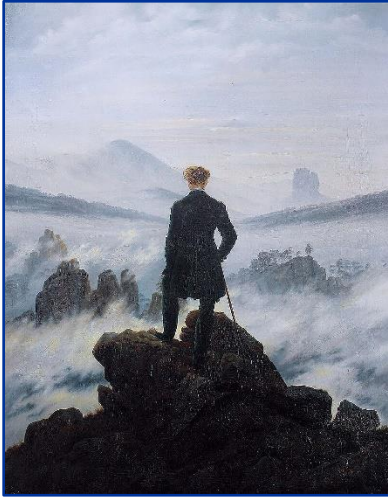
In 1796 *Fisherman at Sea*, shown on the left, is the first oil painting that Turner exhibited at the Royal Academy of Arts when he was still establishing himself as an artist. The painting's bold and dramatic style got him recognition as a rising star in the British art world. The artwork illustrates the concepts of the *sublime* and the *infinite* so dear to the Romantics. One can feel the overwhelming power of nature that is expressed through the imposing presence of the moon and the sea.

By highlighting nature, rather than human subjects or objects, the powerlessness of humanity in the face of nature is revealed. To learn more about J.M.W. Turner, go to <https://www.metmuseum.org/> at the website of The Metropolitan Museum of Art.

Information from this article has been excerpted from <https://www.wikipedia.org>, <https://boisestate.pressbooks.pub/arthistory/chapter/romanticism/> and <https://www.thecollector.com/j-w-turner-paintings/>.

## THE ARTIST'S PALETTE - Continued

### *The Importance of Caspar David Friedrich*



Caspar David Friedrich (1774–1840), a prominent landscape painter of the nineteenth-century German Romantic movement, was known for his evocative portrayals of nature and contemplative figures. In honor of the 250<sup>th</sup> anniversary of Friedrich's birth, the MET presented *Caspar David Friedrich: The Soul of Nature* on February 8, 2025. It is the first comprehensive exhibition dedicated to this artist in the United States. Seventy-five of his works, including oil paintings and drawings, will be on display.

Friedrich was a prolific artist who produced more than 500 works. His paintings, characterized by contemplative figures set against vast and moody landscapes, evoke a sense of the *sublime* beauty of nature. An example is *Wanderer above the*

*Sea of Fog (1818)* which created an emotional connection with the viewer. Shown above, the painting has been considered one of the masterpieces of the Romantic Movement. It depicts a lone man standing upon a rocky precipice with his back to the viewer. He is gazing out on an enormous landscape covered in thick fog. Friedrich was a frequent user of *Rückenfigur* (German: Rear-facing figure) in his paintings. It is a compositional device showing, in the foreground of the image, the back of a person contemplating the view before them.

Shown on the right is *The Abbey in the Oakwood (1809-1810)*, another of one of his popular works which was known for its emotional depth and visual power. This painting is a study in subtle colors rendered in soft shades of browns, yellows, and white. It depicts the crumbling remains of a Gothic abbey set in a field of barren leafless trees suggesting death and abandonment. The outlines of cross markers and tombstones are scattered around the remaining wall of the abbey entrance with its tall thin window. This painting shows the use of negative space, and the lower third of the picture lies in darkness to create a sense of loss and longing. The soft light suggests the sun shines down through the clouds. The oak trees are barren, but not dead. There is a promise of rebirth and resurrection.



As Germany moved towards modernization, Friedrich's work fell from favor during the second half of the 19<sup>th</sup> century. However, during the 1920s his work was appreciated by the Expressionists, and in the 1930s and 1940s, the Surrealists and Existentialists frequently drew on his work. Today he is seen as an icon of the German Romantic movement and a painter of international importance.

Information from this article has been excerpted from <https://caspardavidfriedrich.org/>, <https://www.metmuseum.org/>, <https://www.theartstory.org/artist/friedrich-caspar-david/> and Wikipedia.

## **THIS AND THAT**

### ***Members' Bulletin Board***

#### *Welcome to New Members*



The Long Beach Art League is very pleased to welcome new members Martha Bilski and Jeffrey Koopersmith to our art community. For LBAL membership status and benefits info, email the Membership Chairperson, Linda Kass, at [klinda427@yahoo.com](mailto:klinda427@yahoo.com).

#### *Art League Member Benefits*

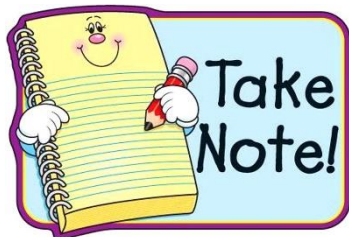


A member can have a link from the LBAL website to his/her website at no charge. If interested, please contact Denise Bory at [sundaze517@aol.com](mailto:sundaze517@aol.com).

Members may publicize their artwork on the LBAL website for a one-time fee of \$35. An artist may post a photo of themselves, a short bio and six images of artwork. If interested, please contact

Denise Bory at [sundaze517@aol.com](mailto:sundaze517@aol.com).

#### *Important Exhibition Guidelines*



When submitting artwork for an exhibit, please cooperate by completing an Entry Form for each piece of artwork PRIOR to appearing before the Receiving Committee. Printing an Entry Form from exhibit email notifications or the LBAL Exhibition Guidelines is the responsibility of each artist. Thank you for your assistance in expediting the exhibit Receiving process!

Receiving and pickup dates are published in the LBAL newsletter and in exhibit email notifications.



#### *Kelly Graham at The Firefly Artists Gallery*

Congratulations to LBAL member Kelly Graham! Her outstanding photo, *Never-ending Sunset*, has been selected for The Firefly Artists Gallery's *Oh, My Heart - Images That Take Our Breath Away Exhibit*. This juried exhibition will be on display until February 15<sup>th</sup> at 90 Main St. in Northport, NY.



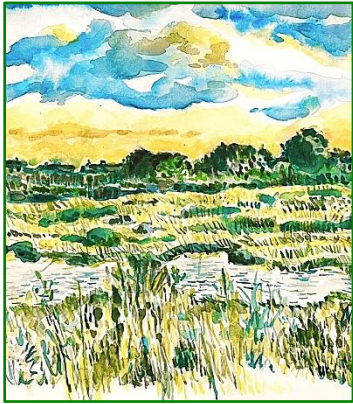
#### *Officers as Artists Exhibit*

Kudos to photographer Kelly Graham on her impressive participation in the first-ever National Law Enforcement Art Exhibition, *Officers as Artists: The Creative Expression of Those Who Serve*. Her popular photo, *Marinera Dancer*, will be on display at the National Law Enforcement Museum's new DuPont Gallery in Washington, DC until August 2025.

Continued on next page



## THIS AND THAT - Continued



### *Mitchell Rodbell's Artwork at the LBPL Local Artist Gallery*

LBAL member Mitchell Rodbell's solo exhibit, *A Colorful Ambiance*, is on display until March 28<sup>th</sup> at the Long Beach Public Library's Local Artist Gallery on the 1<sup>st</sup> Floor. His wonderful collection of lively and colorful artwork will include *Lido Beach Preserve at Sunset* shown on the left. All are invited to the reception on Thursday, February 13<sup>th</sup> from 6:00 – 8:00PM.

Artists, who are interested in solo exhibits at the main branch of the Long Beach Public Library, located at 111 West Park Ave., must read the guidelines and complete the simple online Art Exhibit Proposal Form at [https://lbplny.formstack.com/forms/art\\_exhibit\\_proposal](https://lbplny.formstack.com/forms/art_exhibit_proposal).



### *Artful Salon*

The Art League's popular *Artful Salon* program will return in the Spring at the Long Beach Public Library on Saturday, March 29<sup>th</sup>, May 3<sup>rd</sup> and May 31<sup>st</sup> from 12:30 – 2:00PM. It will allow visual artists the opportunity to network, inspire and learn from each other by sharing ideas, experiences and techniques. Led by LBAL Board Member Carolyn DeSoucey, an experienced art instructor, these periodic meetings are wonderful group sessions for artists of different skill levels to share their

knowledge and talents, find support and continue to grow. Please save the dates!



### *Studio Time Locations*

Artists are invited to paint, create and collaborate in the free open art settings below! Meet local artists and LBAL members. Remember to bring your own painting supplies and tablecloth/newspapers if necessary.

Veterans of Foreign Wars (VFW) Building (675 West Park Ave.) provides space for artists and game players on Tuesdays from 12:00– 4:00PM. Call Larry at 516-987-6634 for information.

St. Mary's Social Hall (312 East Park Ave.) provides space for open studio art sessions with *Club Perspectives*. Artists of every level of ability and interest are welcome on Wednesdays, from 2:00– 4:00PM. The entrance is at the top of the ramp on Monroe Blvd. Call Dessie at 516-661-3979 for more information.

Island Park Public Library (176 Long Beach Rd.) has studio space for artists one Thursday per month in its 2<sup>nd</sup> Floor well-lit Community Room. Upcoming dates are February 13<sup>th</sup> from 12:00 – 3:00PM plus March 20<sup>th</sup>, April 24<sup>th</sup>, May 22<sup>nd</sup> and June 26<sup>th</sup> from 3:00 – 6:00PM. Call 516-432-0122 for information or to confirm date/time.

*Members are invited to submit items of interest for THIS AND THAT to [lindahaber@hotmail.com](mailto:lindahaber@hotmail.com) and [dinafine125@gmail.com](mailto:dinafine125@gmail.com).*