



THE PALETTE



Long Beach Art League

P.O. Box 862 Long Beach NY 11561
Facebook Page: Long Beach Art League
Instagram @longbeachartleagueny
Website: www.longbeachartleague.com

Apr. 2026

The Long Beach Art League expresses sincerest gratitude to the sponsors below for their generous donations, devoted support and commitment to the arts. The funding has been instrumental to our organization and has enabled us to successfully promote the visual arts in the City of Long Beach. In addition, the LBAL provides the community with a variety of art learning experiences which include meaningful classes for seniors, art programs for the public and art scholarships for talented high school students.

Allegria Hotel

Jude Post

UBS

NEXT MEETING

Saturday, April 4th from 2:00 - 4:00PM

In person at the Long Beach Public Library

Located at 111 West Park Ave. in Long Beach

Negative Painting in Watercolor by Julia

Attend a watercolor workshop and learn the technique of negative painting.

(Registration is required.)



Program Info: Join the Long Beach Art League and award-winning artist, Julia Yudes-Kuznetsov, for an exciting watercolor workshop for *members only*. It is designed to expand an artist's skills with a focus on using the negative painting technique to create depth, contrast and texture in watercolor paintings. Participants will learn the concept of negative space, observe step-by-step demonstrations and then create their own paintings. **Registration is required.** Contact lindahaber@hotmail.com for more info or to register.

Speaker Info: LBAL member and acclaimed artist Julia Yudes-Kuznetsov is a popular educator with a strong passion for watercolor. She has taught various levels of watercolor courses and workshops throughout Long Island NY. Because of its transparency and unpredictability, Julia finds watercolor to be a magical medium that tickles the brain. She is also a speech language pathologist and an adjunct faculty member at Adelphi University with an interest in communication and cognition.

MYSTERIES OF THE SEA EXHIBIT

LBAL members are invited to participate in the *Mysteries of the Sea Exhibit* at the 2nd Floor Gallery of the Long Beach Public Library.

Receiving Date: Saturday, March 28th from 11:00AM – 12:00PM

Location: 2nd Floor Gallery at the Long Beach Public Library (111 W. Park Ave.)

Theme: Mysteries of the Sea **Entry Fee:** None **Pickup Date:** May 2nd

Show open to LBAL members only. One piece of art per person.

Continued on next page

MYSTERIES OF THE SEA EXHIBIT - Continued

Please make sure artwork is properly framed and securely wired. A completed Entry Form must be submitted with your artwork. If you have not done so, please read the Exhibition Guidelines, a document which has the procedures for submitting artwork. It is on the LBAL website at www.longbeachartleague.com, and the Entry Form is on the last page. For the online exhibition on the LBAL website, artists should email a high resolution image along with the title, medium and dimensions to Denise Bory at sundaze517@aol.com by March 21st.)

Special Note: When submitting artwork for the exhibit, please cooperate by completing an Entry Form for each piece of artwork PRIOR to appearing before the Receiving Committee. Printers and computers are available for use on the 1st Floor of the Library.

Pickup Date (*Art in Focus Exhibit*): Saturday, March 28th from 11:00AM – 12:00PM

LBAL Shows & Meeting Dates*		
Month	LBPL Gallery Exhibit	General Meeting
May	Dreams Exhibit <i>An Exhibit for Members and Local Artists</i> 05/02/26	Program TBA 05/06/26 7:00PM LBPL Auditorium
June	The Leona Post Juried Exhibit <i>A Juried Exhibit for Members</i> 05/30/26 (No Theme)	Artists' Reception & Judge's Remarks 06/03/26 7:00PM LBPL Auditorium
*Program information subject to change based on inclement weather or unforeseen circumstances.		



LBAL ARTFUL SALON

Saturday, May 2nd from 12:30 - 2:00PM
at the Long Beach Public Library
Program Room (2nd Floor)

***Let's talk about artists and art movements
that have influenced how and what we create.***

Artists should bring a piece of their artwork for discussion.

Space limited. Registration is required.
Call the Library Reference Desk at 516-432-7201 to register.

ART IN FOCUS EXHIBIT



In March the Long Beach Art League (LBAL) was proud to present its diverse *Art in Focus Exhibit* with 38 pieces of fascinating artwork from its skillful members. Perfect for art enthusiasts, this varied exhibition includes intriguing abstracts, excellent collages, impressive oil paintings, powerful portraits, lovely scenes and still lifes, stunning mixed media works and much more. The highlight of the show is the tribute wall to the late Gloria Frey-Yudkin who was an art instructor and past member of the Board of Directors. Don't miss this last opportunity to view a few favorite pieces of this accomplished artist. The exhibit will be on display until March 27th in the 2nd Floor Art Gallery of the Long Beach Public Library (LBPL). Shown on the left is *Filigree of Ice* by Carolyn DeSoucey. The

image of Gloria's favorite *Purple Blouse* is below.



The March 4th General Meeting was very enjoyable and informative. The guest speaker was the renowned Marc Josloff whose outstanding paintings and photographs inhabit many personal and public collections in homes and institutions in the metropolitan area. Much appreciation to Marc for his thought-provoking program, *Driven to Abstraction*, a discussion of abstraction historically and in his own award-winning paintings and photography.

LBAL is grateful to the late Gloria Frey-Yudkin's family for the loan of her artwork for the tribute wall and their presence at the meeting. Many thanks to Richard Verity for his touching remarks about Gloria and for his contributions to her remembrance.

General Meeting - March 4, 2026



Live Model Studio Session

Sunday, March 15, 2026

1:00 - 4:00PM

LONG BEACH PUBLIC LIBRARY 111 West Park Ave.

A \$15 model fee will be collected

Bring pad & drawing media Peer to peer guidance only

Library Registration Required: (516) 432-7201

Contact: lissette@longbeachartleague.com for more info



Live Model Studio Session - March 3, 2026



LBAL members and local artists had a creative and enjoyable evening at the Live Model Studio Session on March 3rd. The drawing and painting activities took place at the healthy and casual eatery, Barrier Beets, located at 190 Boardwalk. This popular program offers artists a rare and rewarding opportunity to work directly with a professional model. Each pose - whether a quick gesture or a longer sustained study - encourages participants to capture proportion, balance and expression in real time.

Special thanks to Coordinator Stefani Jarrett, President Lissette Resnick and devoted art supporter, Barrier Beets, for setting up the event. The restaurant will host the next session on Tuesday, April 21st from 7:00 – 9:30PM. Participants are welcome to purchase dinner at 6:30PM. Please check for email confirmation of the date.

COLORS & CONTOURS EXHIBIT

Members of the Long Beach Art League had a golden opportunity to showcase their work in the *Colors & Contours Exhibit* at the beautiful and spacious Shelter Rock Art Gallery. Over 60 pieces of impressive artwork were displayed at the gallery located at the Unitarian Universalist Congregation at 48 Shelter Rock Road in Manhasset, New York. The Artists' Reception on Sunday, February 15th was very well attended by the public and members with their friends and family. The huge crowd had a lovely time chatting, admiring the artwork and enjoying delicious refreshments.



Congratulations to the participating artists for a spectacular exhibition! Much gratitude to President Lissette Resnick, Richard Verity, Susan Laudani Stolfi, Lisa Dawn Romano, Jack Tenenzaph and Adriena Masi for their efforts in setting up the uplifting show and reception. Artists must pick up their artwork on Tuesday, March 17th from 10:00AM – 12:00PM.



LONG BEACH FINE ART EXPO IV



The Long Beach Fine Art Expo IV will be on Sunday, May 3, 2026 at the luxurious grand ballroom of the Allegria Hotel. Many talented local visual artists will participate in this popular sales event which is being organized by representatives of the LBAL and WEA. For the prospectus and entry form, go to the LB Fine Art Expo page of the Art League website at www.longbeachartleague.com or email longbeachfineartexpo@gmail.com. The submission deadline is March 20th. Shown above is LBAL member Tom Baker with his artwork at Expo III.

WHAT'S HAPPENING

Exhibition Opportunity at the Art Alcove

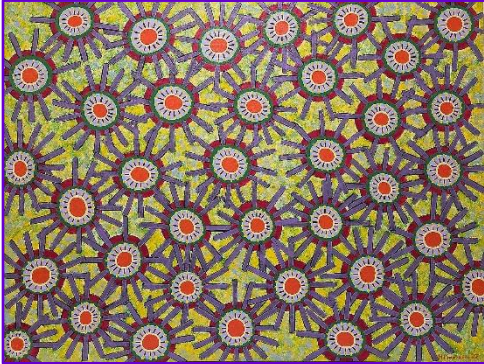


The *Art Alcove*, a vibrant exhibition space, is managed by the Long Island Arts Council at Freeport (LIACF). The organization provides a meaningful opportunity for emerging and established artists to display their work in a public setting that reaches a wide community audience. Located in the lobby of the Freeport Recreation Center (130 E. Merrick Rd.), the Art Alcove is more than just a display area - it's a platform for

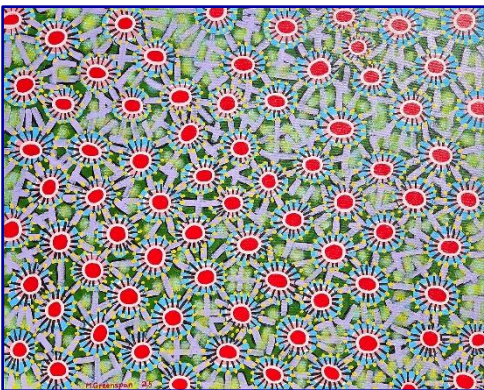
creative voices to connect with thousands of visitors each month. The spacious gallery can accommodate a range of artistic media, though it is particularly well-suited for two-dimensional works.

The Arts Council has an open submission process year-round. Artists interested in having a two-month show in the Art Alcove or the adjacent Art Alley should contact the Council with examples of their work, a description of the pieces to be displayed and relevant contact info. Please email info@liacf.org or call 516-223-2522 for more information. The LIACF website is at <https://www.liacf.org/>.

Crazy Eyes Series on Exhibit



Heartiest congratulations to LBAL member Mitchel Greenspan on his exciting accomplishment. Five recent paintings, from his *Crazy Eyes Series*, are now showing at the *New England Contemporary* in East Greenwich, RI. The gallery displays a collection of the best and brightest new art from the East Coast and beyond. Go to <https://newenglandcontemporary.art/> to view the works by Mitchel on the gallery's website.



To see his artwork in person, go to the very enjoyable Spring edition of the *Affordable Art Fair New York* from March 18th - 22nd located at Starrett-Lehigh Building, 601 West 26th St. in Chelsea, NY. The fair showcases thousands of contemporary art, ranging from \$100 to \$12,000, submitted by local, national and international galleries. For more information about this fair of artworks from established artists and rising stars, go to <https://affordableartfair.com/fairs/>.

Follow Mitchel on Instagram @mitchelgreenspan to see his outstanding creations.

Submit exhibits, events and member news for *WHAT'S HAPPENING* to lindahaber@hotmail.com.

NEW MEMBERS

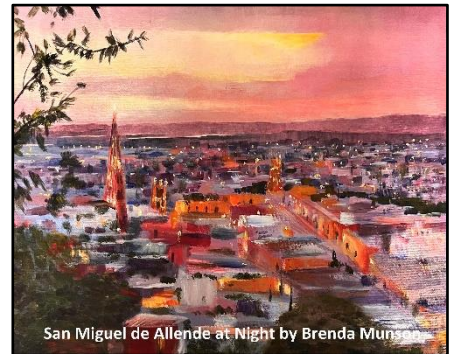
The Long Beach Art League is very delighted to welcome married couple Brenda Munson and Greg Rutherford as new members. They have recently exhibited at the Lynbrook Public Library in 2025. Below is information about both charming individuals.

Brenda Munson



Brenda Munson's artistic journey began in her youth with an introduction to oil painting through an after-school program. During her early education, she experimented with various materials. While attending the Fashion Institute of Technology (FIT), she further developed her practice, producing representation pieces to support her interior design focus, primarily utilizing watercolors. For the next four decades, Brenda set aside her passion for painting and drawing to focus on her professional career as a Project Manager for commercial fit-out work nationally.

Encouraged by Greg to reconnect with her creative roots, Brenda returned to painting with renewed vigor in retirement, embracing acrylics as her medium of choice. Her work, characterized by a graceful realism, invites viewers into a vivid world of people and landscapes. With attention to detail and use of color, Brenda's painting captures fleeting moments in time, offering an intimate glimpse into her perspective. Each piece beckons the viewer to step into her world, sharing in the beauty and emotion of her carefully crafted local scenes of people and places.



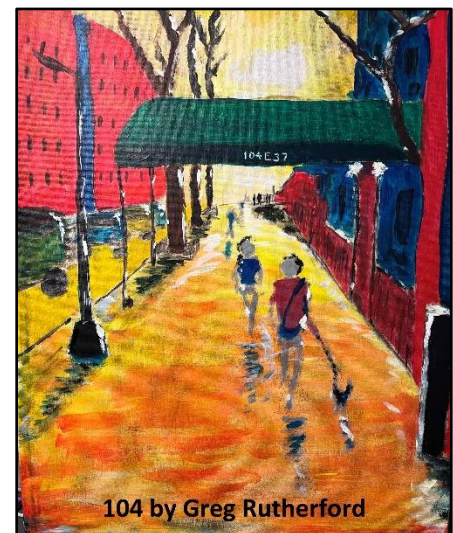
Greg Rutherford



Greg Rutherford, a mechanical engineer by education, discovered his passion for painting in retirement at the suggestion of his wife, Brenda, who envisioned it as a shared creative pursuit in retirement. With no prior artistic background, Greg embraced acrylics and embarked on a vibrant new adventure in the art world. His early works, small-scale acrylic landscapes, introduced an unusual, slightly abstract style that hinted at his

unique perspective.

As his confidence grew, Greg expanded his practice to include assemblage pieces and drawing, continually pushing the boundaries of his creativity. His work is characterized by dynamic perspectives and a whimsical, exciting use of vibrant colors, creating striking contrasts that captivate the viewer. Greg's art invites exploration blending playful imagination with bold compositions. Ever evolving he continues to experiment with new subject matter, infusing his pieces with a sense of fun and discovery that reflects his boundless enthusiasm for artistic expression.



PRESIDENT'S MESSAGE



Dear LBAL Members,

It's such a relief to feel the promise of spring in the air and to finally leave the long, brutal winter behind us. This time of year always brings a renewed sense of energy and creativity, and I look forward to seeing how that inspiration shows up in everyone's work in the months ahead.

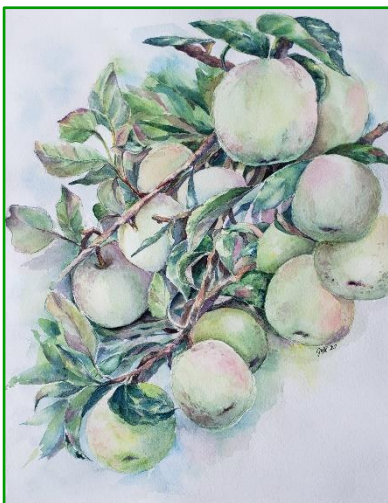
I'd like to extend a heartfelt thank you to everyone who participated in the Shelter Rock Art Gallery Exhibit. It was truly a wonderful show, with 36 members exhibiting and sharing such beautiful and thoughtful work. It's always exciting to see our artists represented outside of Long Beach and to continue expanding our presence in the broader arts community. A very special thank you to Adriena Masi for bringing this opportunity to us - your initiative helped make this memorable exhibition possible.

As we look ahead, I encourage members to apply to our biannual Long Beach Fine Art Expo and attend to support fellow artists from across Long Island. EXPO IV will be on Sunday, May 3rd at the Allegria Hotel. This sales exhibition continues to be one of our most vibrant events, bringing together artists, collectors and the community for a day dedicated to creativity and connection.

Thank you, as always, for your participation, your generosity and the spirit you bring to this community. I look forward to seeing you at our upcoming exhibits and events as we enjoy the beauty and renewal of the season together.

With gratitude,
Lissette Resnick
President, Long Beach Art League
lissette@longbeachartleague.com

ADVANCED WATERCOLOR PAINTING WORKSHOPS



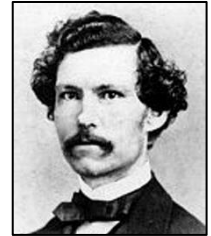
LBAL member Julia Yudes-Kuznetsov will be teaching *Advanced Watercolor Painting Workshops* on Tuesday mornings in April at the Magnolia Senior Center located at 650 Magnolia Blvd. The program will be free to seniors registered at the Center. The challenging workshops will cover techniques such as wet-on-wet, wet-on-dry and intricate color layering. A special focus will be placed on the complexities of the color green, teaching students how to achieve perfect natural shades through pigment mixing. Through live demonstrations and guided practice, participant artists will strengthen their skills and complete a finished project. Registration is required. For more information, Long Beach residents should contact the Senior Center at (516) 431-3510.

THE ARTIST'S PALETTE

This column features art history and work methods which may be helpful to artists.

Alonzo Chappel

Alonzo Chappel (1828–1887) holds a distinctive place in 19th century American art for his ability to translate history into compelling visual narratives through oil painting. Best known for his scenes of the American Revolution and Civil War, early colonial life and prominent historical figures, Chappel's artwork helped shape how generations of Americans imagined their national past.



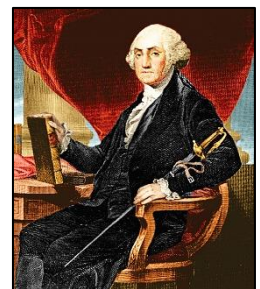
Alonzo exhibited talent as a painter before he was ten and earned money painting portraits and theatrical stage scenery while still in his teens. He refined his skills under the instruction of Samuel F. B. Morse and became one of the most prolific historical painters of his generation. Chappel worked mainly as an illustrator, creating paintings which were reproduced, mainly as steel engravings, in books.



A powerful piece of his depicts the climactic moment of the *Battle of Long Island*. Historian David McCullough regards the artwork as one of the great paintings of the American Revolution, commenting that it *gives a sense of what battles really were like*. In it, the Maryland Continental Line, obscured by battle smoke in the middle of the scene, holds off the final British attack while a large part of the Continental Army wades into Denton's Mill Pond to escape entrapment and make its way to the shelter of Washington's fortified lines on the heights of Brooklyn.

In Chappel's oil paintings he favored intimate drama, focusing on the human presence within historical moments. Faces are individualized and clothing and interiors were meticulously rendered. His original artwork revealed a depth and painterly sensitivity. Subtle brushwork, layered glazes and tonal contrasts gave his figures weight and atmosphere, demonstrating his command of traditional oil techniques.

Chappel spent his later life in Middle Island, Long Island where he maintained a studio and continued to paint. He died in 1887 leaving behind an enormous body of work. Some of his canvases are held in museums and private collections, but most works are known only through contemporary prints. When the rise of photography and modern art shifted public tastes, his influence continued to endure in the way Americans still visualize their early history.



Information from this article has been excerpted from Center for Brooklyn History and CHATGBT.

THIS AND THAT

Members' Bulletin Board



Medical Arts Pavilion Exhibit

The *Timeless Horizons Exhibit*, which includes about 20 works by members of the Long Beach Art League and West End Arts, is on display at Mount Sinai Doctors – Long Beach located at 440 East Bay Drive. The artworks were selected by a Mount Sinai South Nassau committee who reviewed images submitted by members of both organizations. The artists' reception is on

Wednesday, March 18, 2026 from 5:30 – 7:00PM. Art pickup is on Friday, March 27th from 9:00 – 10:30AM.



Artists in Partnership, Inc. Ninth Annual Women in the Arts

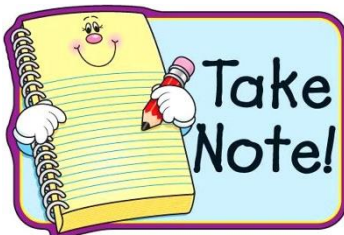
Heartiest congratulations to both photographer Lisa Dawn Romano and multi-talented Stephanie Erdel-Laws who will receive the Artists and Community Award at AIP's 9th *Women in the Arts* event. The League is so proud to have two members being recognized for their contributions to the arts. This uplifting awards and fundraising gala which will be on Thursday, April 16th from 6:00 – 10:00PM at the Allegria Hotel's Grand Ballroom. There will be live music and a buffet by JJ Cooper. Tickets and journal ads can be purchased at www.aip4arts.org.



Art League Member Benefits

The *LBAL* website, www.longbeachartleague.com, features important information such as a digital version of juried exhibits, a list of members, artists' bios and artwork, the monthly newsletter, exhibition guidelines and entry form, membership form, etc. View the website with friends and family to learn all about our Art League, our members and their artwork.

Members, who have exhibits or programs that they would like to share on the *LBAL* Facebook page, should send all information and flyers to Denise Bory at sundaze517@aol.com. Exhibit and program information as well as member news should be emailed to lindahaber@hotmail.com for publication in *THE PALETTE*.



Important Exhibition Guidelines

Photographs of artists and their artwork as well as artists' names and business contact information may be published on the *LBAL* website, Facebook page, Instagram account, newsletter and other media.

Work on paper must be framed with glass/plexiglass. Plexiglass is suggested because it is shatterproof and lighter. Mats/glass/frames must be clean and unscratched. Frames must be in good condition, sturdy and properly wired for hanging. No sawtooth hangers allowed unless there is a wire loop that will not be visible when the artwork is hung.

Members are invited to submit items of interest for THIS AND THAT to lindahaber@hotmail.com